

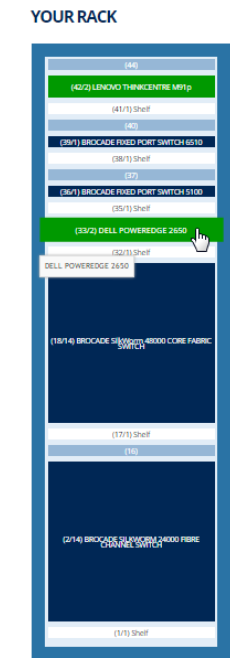
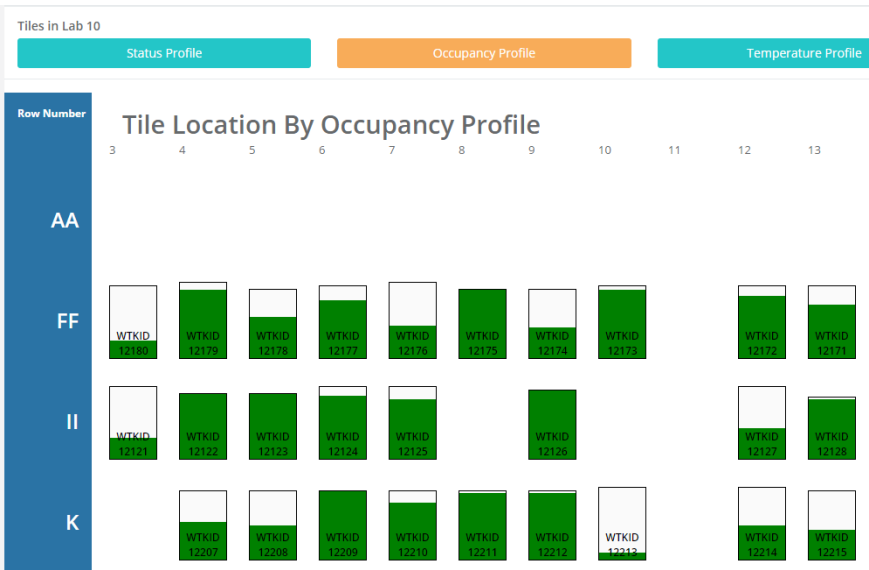
 AudIT



 Wisetek™



Wisetek provide the service to physically audit IT equipment at our client’s facilities in order to support IT optimization and transformation projects. The challenge faced by many of our clients when undertaking IT projects, is a lack of accurate reports representing the physical reality of the equipment on sites, particularly as many if these facilities are spread globally and may not have the IT resource to perform such audits. IT engineering, DCIM or Network Crawlers have their part to play, but for a variety of reasons a real time physical assessment is required to support accurate transformation decisions.



**DETAILS**

**RACK LOCATION**

Building : 176  
Room : 10  
Row : FF  
Tile : 4

**POWER**

10 x NEMA-15

**RACK HEIGHT**

44

**RACK TEMPERATURE**

°C

**DRIVES**

0

**UTILIZED**

91%

# The Challenge

How to get an accurate report of the actual IT equipment situated in a variety of facility types globally? Either powered or decommissioned systems.

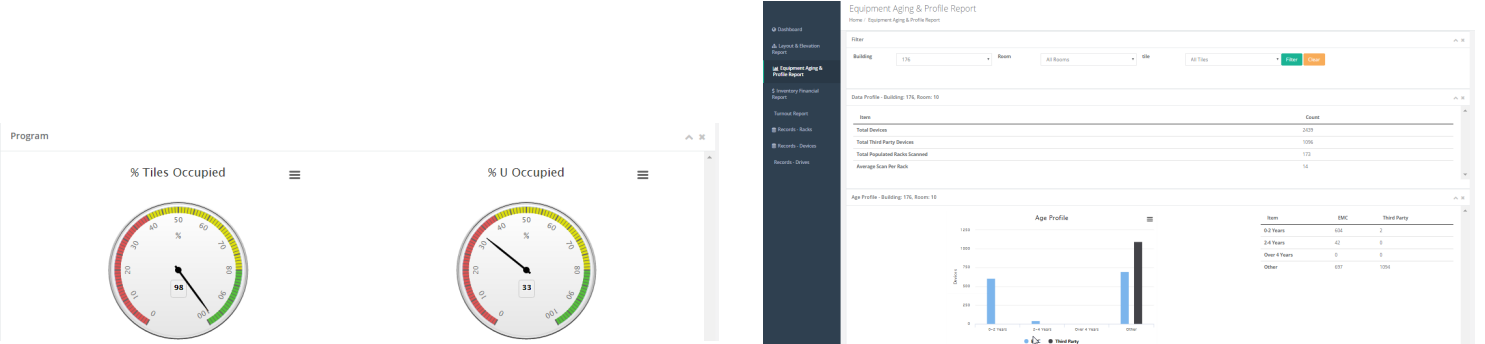
# The Solution

Wisetek specialize in supporting the lifecycle of enterprise IT equipment - this includes the capability to perform physical onsite audits of any type of enterprise IT equipment.

Wisetek personnel will perform a complete physical inventory of every site, around the globe, and prepare detailed reports as follows:

- Full inventory listing, by HDD, Chassis, Rack, Tile, Aisle and room
- Density by Chassis, Rack, tile, Aisle and Room
- Operational Profile
- Age Profile
- Temp & Power
- Redundant Equipment Valuation

Our reporting suite can be tailored to meet specific client requirements including reconciliation to Fixed Asset registers, Engineering systems and/or accounting system logs /reports etc. Customers will obtain a complete map of their IT equipment for any site in the world. Identifying all assets in various locations that pose an opportunity for improvement, and a risk of data breach. This data will be provided through a single portal, reporting on all sites in a consistent and user friendly manner.



This data provides the input into transformation planning for customers to utilize for planning improvement projects, such as consolidation, cloud hosting, or ESM/DCIM installation/reconciliation. Wisetek can also provide implementation support, ensuring that all equipment listed for removal is powered down and removed. Complete chain of custody (down to the HDD) is maintained for all equipment leaving a site, be that redeployment within client or release to realize equipment value. Data sanitization services can be offered onsite or offsite using our unique DataDEAD™ service, depending on client requirements. The challenge of managing a transformation project of globally dispersed IT equipment is no longer at risk due to the inaccurate starting point. Wisetek can provide our clients with a sound footing on which to develop IT improvement projects and ensure total peace of mind in dealing with equipment moves and data sanitization.



Global provider of end-to-end IT Asset Disposition (ITAD) Services.

Leaders in the Circular Economy, Wisetek prioritise the recovery of material, either for reuse within our client's operations or for remarketing to our global network of buyers through Wisetekmarket.com. These reuse priorities assure our clients that they receive optimal financial return from their IT assets.

Material no longer required is recycled to Wisetek's Sustainable EARTH standard, which is externally certified to the R2 Responsible Recycling standard and is compliant with global e-waste regulations.

Wisetek operate from bases in Ireland (Cork & Dublin), USA (Massachusetts & Texas) and Thailand (Laem Chabang).

[enquiries@wisetek.net](mailto:enquiries@wisetek.net) | [www.wisetek.net](http://www.wisetek.net)